

- 1
- 2
- 3
- 4
- 5
- 6
- 7
- 8
- 9
- 10
- 11
- 12
- 13
- 14
- 15
- 16
- 17
- 18
- 19

**1 GUIDE TUBE**

AISI 304 stainless steel.

**2 SHAFT**

Stainless steel.

**3 END CAPS**

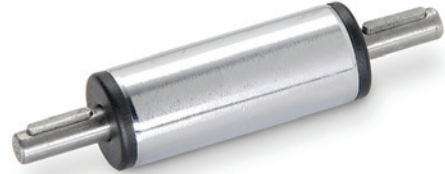
Polyamide based (PA) technopolymer.

**4 FEATURES AND APPLICATIONS**

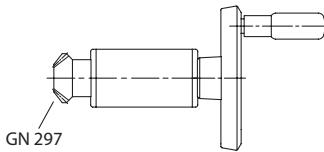
GN 391-NI connecting units are used with linear actuators GN 291 (see page 1374) and GN 292 (see page 1373).

They are used to transfer the linear actuator rotating movement to a different position.

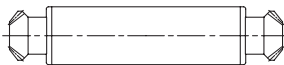
By using GN 297 (see page ) angular gear it is possible to rotate the linear actuator operating axis by 90°.



**Guide elements**



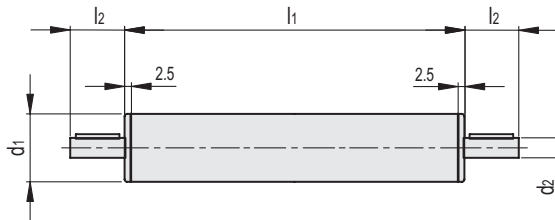
**Transfer units**



**Conversion Table**

1 mm = 0.039 inch

d	
mm	inch
18	0.70
30	1.17
40	1.56
50	1.95
60	2.34



Tube connectors

Code	Description	d1	d2	l1	l1*	l2	△
GN.67951	GN 391-18-47-NI	18	6	47	42 ... 500	16	65
GN.67961	GN 391-30-60-NI	30	8	60	55 ... 2000	16	185
GN.67971	GN 391-40-93-NI	40	12	93	88 ... 2500	17	528
GN.67981	GN 391-50-93-NI	50	12	93	88 ... 2500	18	772
GN.67991	GN 391-60-95-NI	60	14	95	90 ... 2800	19	1165

1

\*(available upon request)